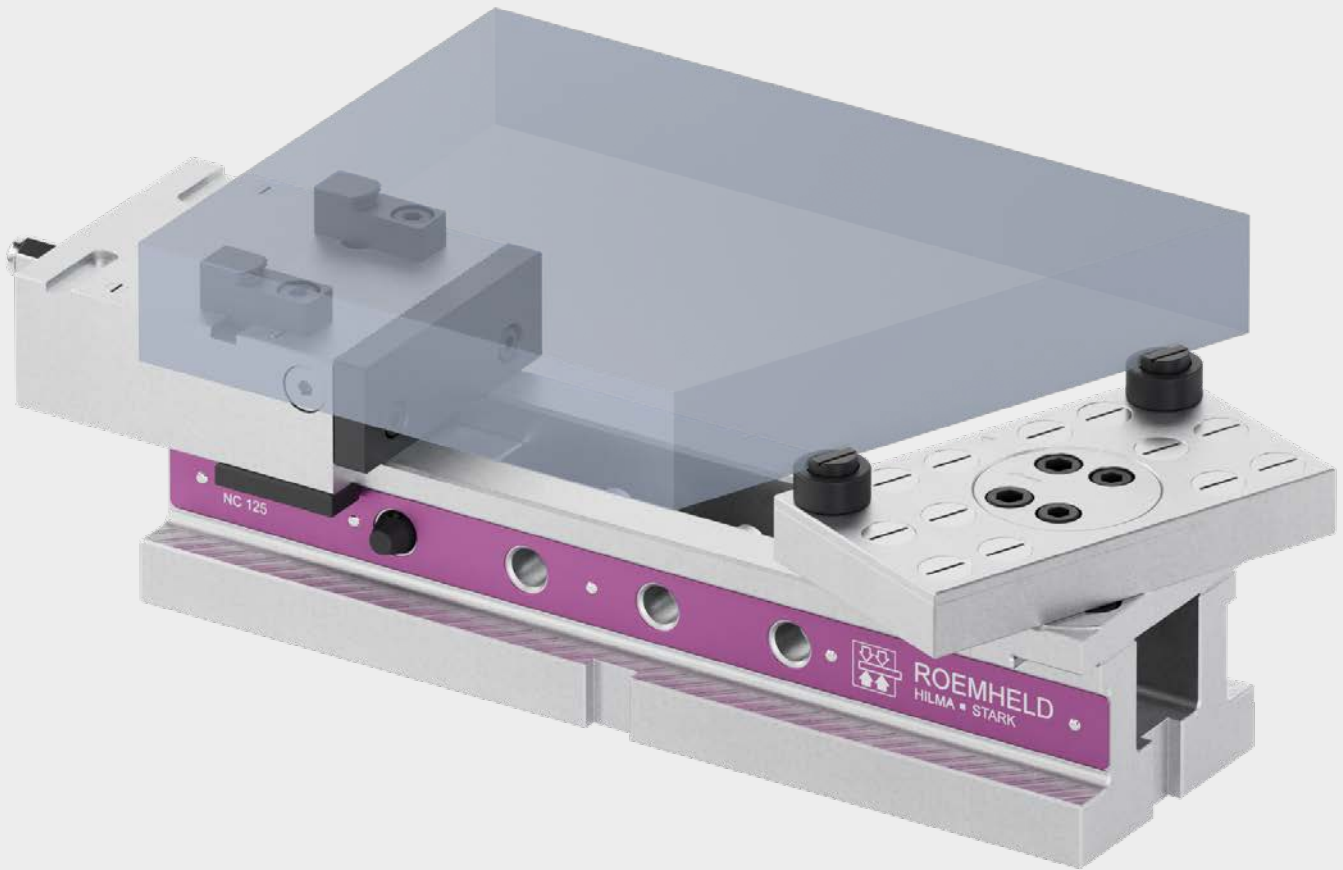




ROEMHELD
HILMA ■ STARK



Pendulum top jaws

Reliable clamping for
demanding workpieces

HILMA.NC 125 and 160 mm

Pendulum top jaws



+ Reliable clamping for demanding workpieces

Perfect for flame-cut parts, castings, and raw parts

When clamping flame-cut parts, castings, and other irregular workpieces, maximum clamping reliability is required. Our vises with pendulum jaws adapt flexibly to the respective shape and ensure uniform clamping force, even with complex geometries. Robust, precise, and proven in practice: For maximum efficiency and safety in your production.

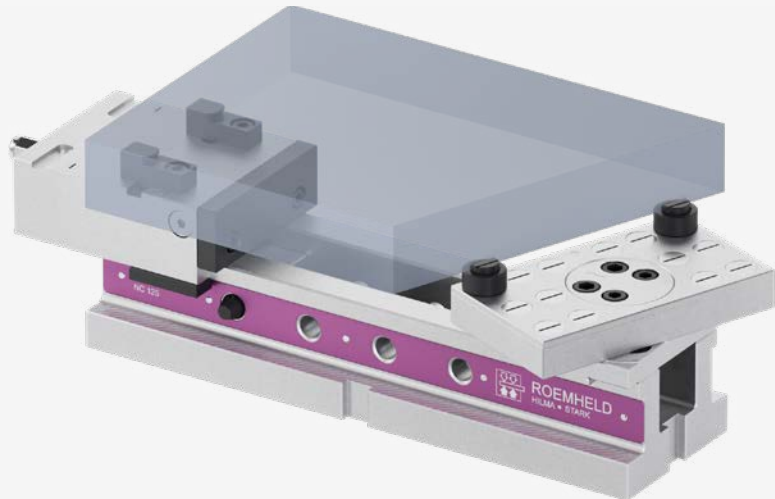
Modular pendulum jaws for complex clamping tasks

Within the HILMA.NC product family, modular pendulum jaws enable the flexible implementation of demanding clamping tasks. The contact points of the movable jaw can be freely positioned and optimally adapted to the workpiece geometry – ideal for changing contours and irregular raw parts.

INFO

Pendulum jaws application with flame cutting

Secure clamping of flame-cut parts with uneven edges, for example



INFO

Pendulum jaws application with cast part

Even castings with free-form surfaces can be clamped securely



Pendulum top jaw set for HILMA.NC 125



The pendulum jaws are available for a jaw width of 125 mm and come in a standard width of 189 mm. Of course, the jaws can also be customized to suit the specific clamping task.

Scope of delivery:

- Pendulum jaw with a width of 189 mm
- 2 support rings and 2 movable grip inserts
- 12 aluminium screw plugs
- Required fastening materials

Type	Order number	Description
NC 125	937111301	Pendulum jaw set for HILMA.NC 125

Pendulum top jaw set for HILMA.NC 160



The pendulum jaws are available for a jaw width of 160 mm and come in a standard width of 189 mm. Of course, the jaws can also be customized to suit the specific clamping task.

Scope of delivery:

- Pendulum jaw with a width of 189 mm
- 2 support rings and 2 movable grip inserts
- 12 aluminium screw plugs
- Required fastening materials

Type	Order number	Description
NC 160	937111401	Pendulum jaw set for HILMA.NC 160

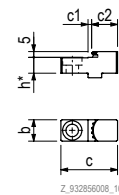
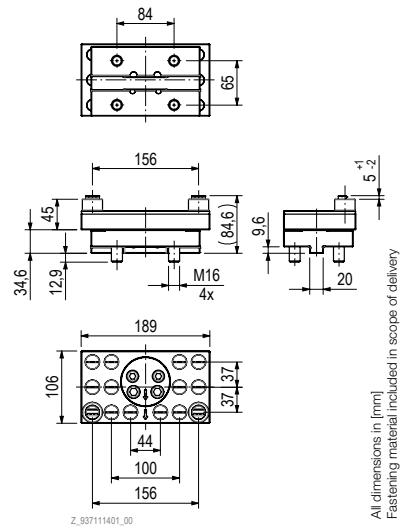
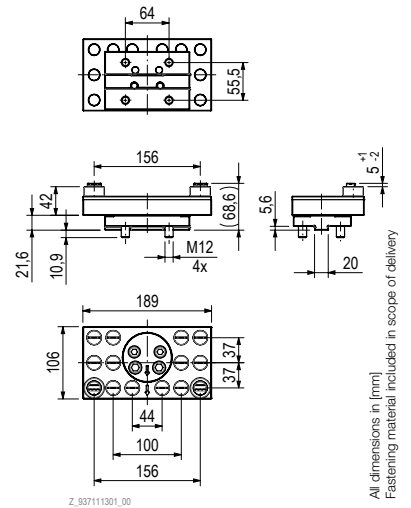
Top jaw segments, annealed, hardened and ground



Top jaw segments are used for clamping round blanks, for example. In combination with pendulum top jaw, use on the slide side.

Scope of delivery: Set with 2 segments and 2 fixing screws

Type	Order number	b	c	c1	c2	h
NC 125	932851302	19	50	3	23	14
NC 160	932851402	28	60	6	22	17



All dimensions in [mm]
Fastening material included in scope of delivery

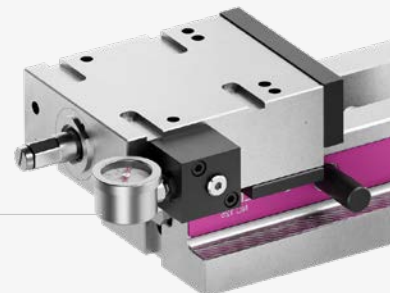
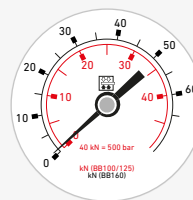
All dimensions in [mm]
Fastening material included in scope of delivery

* Tolerance ± 0.01 mm
All dimensions in [mm]
Fastening material included in scope of delivery

INFO

Secure clamping of raw parts with controlled clamping force

Especially for raw or cast parts, a vise with an integrated clamping force indicator is crucial for process reliability. This is the only way to reliably check whether the required clamping force is actually applied to the workpiece – and has not been reduced by settling behaviour or other influences.





ROEMHELD
HILMA ■ STARK

STARK Spannsysteme

A company of the ROEMHELD Group

STARK Spannsysteme GmbH
Römergrund 14 | 6830 Rankweil
Austria

+43 5522 37 400 - 0
info@stark-roemheld.com

stark-roemheld.com